



# IT'S PEPPER TIME!

UNIVERSITY OF ARKANSAS CROSS COUNTRY COURSE  
FAYETTEVILLE, ARKANSAS



**SATURDAY 9.22.18**

## RACE SCHEDULE

Packet Pick Up Onsite	Friday, Sept. 29 5:30-7:30 PM
Tom Lewis 1 Mile Friday Night Pepper Dash	6:30 PM
Chile Pepper 10K Open	7:15 AM
Chile Pepper 5K Open	8:45 AM
<b>Award Ceremony: Chile Pepper 10K Open</b>	<b>9:05 AM</b>
<b>Award Ceremony: Chile Pepper 5K Open</b>	<b>9:30 AM</b>
Men's Collegiate (8K)	9:30 AM
Women's Collegiate (5K)	10:20 AM
<b>Award Ceremony: Collegiate Men and Women</b>	<b>11:10 AM</b>
Senior High Boy's "El Caliente" (Varsity-5K)	11:00 AM
Senior High Girl's "El Caliente" (Varsity-5K)	11:30 AM
Senior High Boy's Open (5K)	12:15 PM
Senior High Girl's Open (5K)	1:00 PM
<b>Award Ceremony: Senior High School</b>	<b>1:45 PM</b>
Junior High Boys (5K)	1:45 PM
Junior High Girls (5K)	2:30 PM
<b>Award Ceremony: Junior High School</b>	<b>3:15 PM</b>

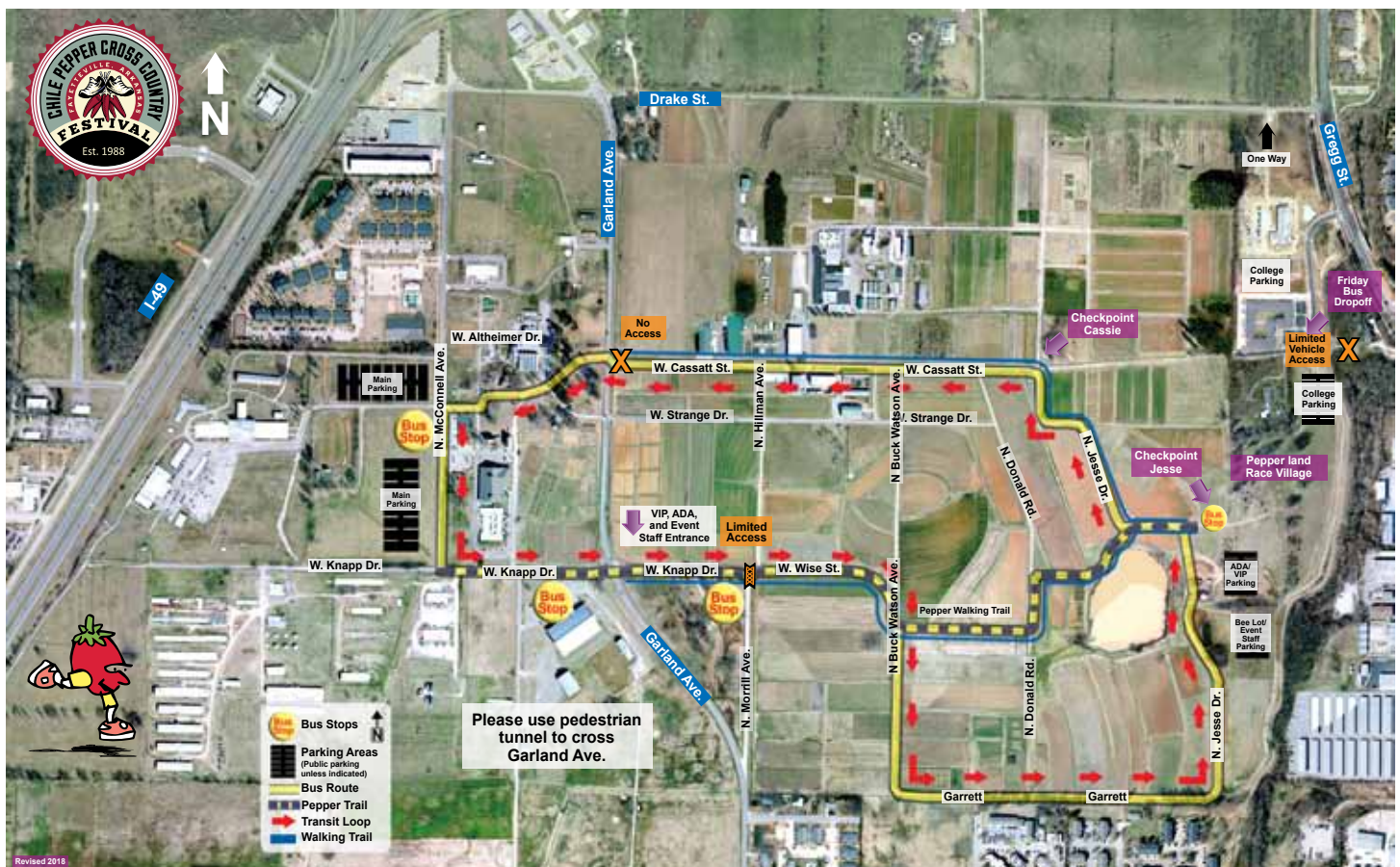
## MEDIA INFORMATION

- Non-collegiate athletes will be available immediately following their finish of the race. If requesting collegiate athletes, please see the respective sports information contact.
- OPEN RACE and COLLEGIATE results: Beyond the top 50 places are available online at the following website address: [www.chilepepperfestival.org/race/event-results/](http://www.chilepepperfestival.org/race/event-results/)
- High School Invitational results from 2004 and sooner are all available online.
- Results produced as quickly as possible on-site at the media tent/awards stand, online during the event at <http://www.flashresults.com/results> and online at [chilepepperfestival.org](http://chilepepperfestival.org) following the event.

## PARKING MAP

Parking is located beside the Washington County Fairgrounds (east side lot only), Whittaker Equine Center, and Agri Park, which are all located on Hwy. 112. Transit Buses will shuttle participants from the parking lots to the drop-off point near the course from 6:00 a.m. to 2:30 p.m. Some walking is required. For assistance, please contact Jay Lewis at 479.530.5954.

Photos by Megan Sebeck at 1611' Photography and Vaughn Skinner  
Media Guide design by Debbie Pierceall





# THE CHILE PEPPER STORY

## THE STATS

What do 500 lbs of taco meat, 500 lbs of sandwich meat, 1000 pounds of fruit, 100 gallons of salsa, 150 lbs of chips and 5,000 runners have in common? They will all collide on September 30th at The Chile Pepper Cross Country Festival. This much anticipated sporting festival, in its 3rd decade, is one of those annual events that give Northwest Arkansas its unique charm.

John McDonnell, retired University of Arkansas Coach and Chile Pepper Board Member, "This is one of the country's best events for young people to experience national caliber competition on a great course and see the best of the best. Northwest Arkansas has worked hard to develop and host one of our nation's finest running festivals. It gives amateur runners the chance to race on one of the best courses, and it is a great day for spectators of all ages."

This one-day event will attract 6,500+ runners comprised of 90 colleges, over 250 high schools and more than 800 amateur runners from across the nation to the Northwest Arkansas area. Equally impressive is that there will be more than 5,000 spectators, many of whom are parents and grandparents of the college and high school runners.

## THE HISTORY

By now, most people have heard of the unique history that filled a community need. In 1988, Joe Fennel, Randy Rhine, and Kelly O'Meara, the Fayetteville High School cross-country coach, were out running. Kelly mentioned that his cross-country budget was \$100.00. Joe and Randy created the Chile Pepper Running Club and from there, the Chile Pepper Run. It was originally held in May and consisted of the 10K open cross-country run only. The festival was created in 1992 to bring together three Northwest Arkansas crosscountry races under one event which has blossomed into a premier running event in America. The Festival united the Chile Pepper Run; the Arkansas Invitational - the annual Men's and Women's Razorback home meet; and the Fayetteville High School's Purple Dog Invitational. This created the platform and critical mass for exponential growth that literally fed on itself.

"Joe Fennel, festival founder, deserves "godpepper status" for nurturing the event from its seeds of infancy to the giant pepper it is now. However, it is larger than any one person now, and constituents of the community keep growing the event each year with a shared vision to benefit our next generation of runners" said Jay Lewis, Race Director.



Race Director Jay Lewis and Joe Fennel, also known as "The Godpepper"

## THE EVENT TODAY

Now the Chile Pepper hosts approximately 10,000 people each year and has a distinct positive economic impact not only to the running community but Northwest Arkansas at large. Dozens of teams and hundreds of people stay in hotels, go to restaurants, buy gas, and create a home grown boost for the area.

It takes a lot of commitment on the part of hundreds of volunteers, thousands of participants and the Chile Pepper Board who organizes this Festival. It requires money and resources to manage an event of this scale. "Every non-profit must work hard to obtain resources. Chile Pepper has been most fortunate that most local sponsors have maintained their level of support and several new sponsors added their resources to continue to grow this nationally recognized event and expand support for our local athletes. Several great stories happen each year such as Creative Awards donated the awards and design work while Jose's and Ben E. Keith provide a \$20,000 taco feast."

## MISSION STATEMENT

We inspire and support Northwest Arkansas youth cross country teams, promoting the benefit of exercise, healthy lifestyle, teamwork and lifelong sport.

---

## BOARD OF DIRECTORS

**John Bitler**, President

**Jay Lewis**, Race Director

**Ken Robertson**, Treasurer

**Natalie McBee**, Secretary

**Reuben Reina**, Board Member

**Bo Grimes**, Board Member

**Michael Bakaric**, Board Member

**Amy Mortimeyer**, Board Member

**John McDonnell**, Advisor to the Board

**Aaron Kribs**, Advisor to the Board

**Mike Rush**, Advisor to the Board

**Mike Armstrong**, Advisor to the Board

**Wanda Lanier Conway**, Advisor to the Board

**David Swain**, Advisor to the Board



# THE CHILE PEPPER STORY

A consistent belief shared among the Chile Pepper Board is that running is a sport that can last a lifetime, and an organized start can help kids learn to train right and stick with it. Perhaps Chile Pepper Board Member Reuben Reina sums it up best, "I got involved with the Chile Pepper Race to give back to the sport that has given me so much in life, and to help the next local kid to have the opportunity to reach his or her dreams in the sport."

## HOW THE SCHOOLS HELP

2018 will attempt to match the record set for school donations in celebration of the 30th year. The Chile Pepper Race Committee donated \$5,000 each to the eight area high schools. In addition, nine smaller area schools received \$2,000 for each of their programs and several Jr. High Schools will receive special funding of \$500 each.

Each school provides volunteers to help the event with duties such as: course set up/tear down, food service, water stations, merchandise sales, trash pickup, registration, etc... They know without their teamwork and involvement, the gun would never go off. Even more amazing are the dozens of unsung "citizen" volunteers who approach the committee offering to perform necessary tasks to make the event run smoothly and safely" said Ken Robertson, Treasurer and VIP Tent Coordinator.

Over the last 29 years, we have expanded the amount given and the reach of high schools we support (now the four county Northwest Arkansas area). Last year we gave \$77,000 to local high school programs bringing the total for the 29 years to over \$650,000. Special for the 30th anniversary, and Chile Pepper, is also reaching directly to the Junior High level to support coaches in engaging youth at an even younger level. In addition to our continued support of high school programs, this year we have celebrated the 30th year by again helping to distribute up to \$20,000 directly to local public junior highs (only requirements, they must have a cross country running program accredited with the state, attend the Chile Pepper and fill out an online survey).



Gravette volunpeppers who helped paint and mend fences.

The Tom Lewis 1 Mile Pepperdash will be held on Friday, September 22nd. This time, it will include the Under 12 Years Old World Championship of Northwest Arkansas. This is an event that runners of all abilities can enjoy. It's a salute to one of Joe Fennel's first supporters of the race over 29 years ago and long time race sponsor, Lewis Automotive.

Saturday, September 22nd is when most of the activities take place. The Open 10K will begin at 7:15am and the Open 5K at 8:45am. The collegiate men's race is followed by the collegiate women's race. Following the collegiate races, six boys and girls senior and junior high school races will be held with participants from Arkansas, Oklahoma, Texas, Louisiana, Missouri, Kansas, and other states.

## FOOD AND FUN STUFF

The festival has some other unique features tied to its roots and the NWA area. Jose's Bar and Grill (with help from Ben E. Keith and Twin City Produce) feeds all runners for free who participate in the race and spectators for \$5. The festival continues the tradition of a 'running Chile pepper' themed t-shirt that sells out each year. Back this year is a VIP tent that provides perks such as on course parking, valet bag storage, extra portapotties, and no registration or food lines. Unique awards including locally custom-designed pottery plates maintain the character of the Chile Pepper along with a merchandise tent that has chile peppers available to wear from head to toe.

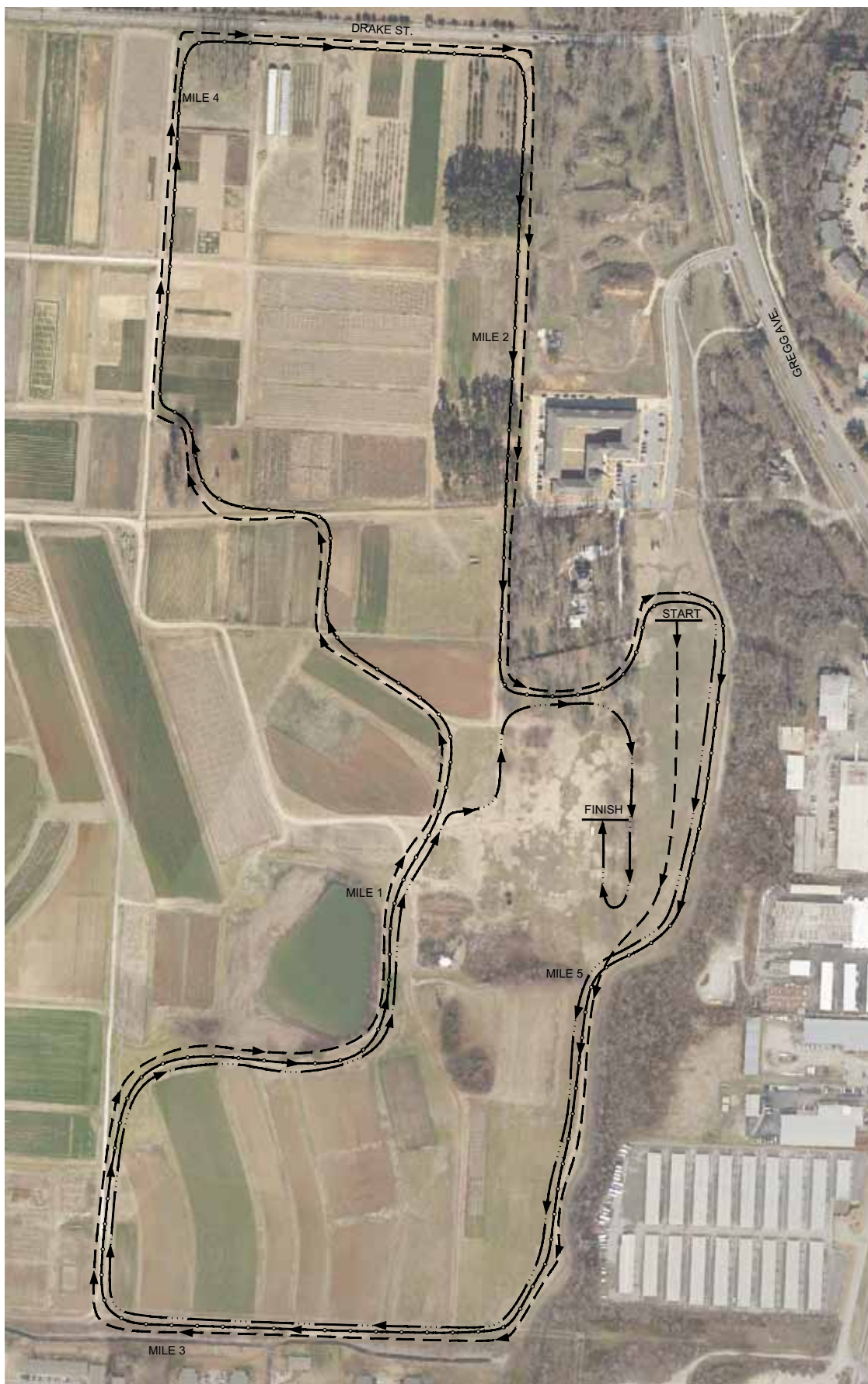
## FOR MORE INFORMATION

Visit [www.chilepepperfestival.org](http://www.chilepepperfestival.org) for more detailed race information, event schedule, maps or to register for events.


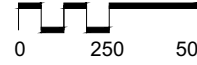


Farmington High School Volunpeppers who helped set up course.

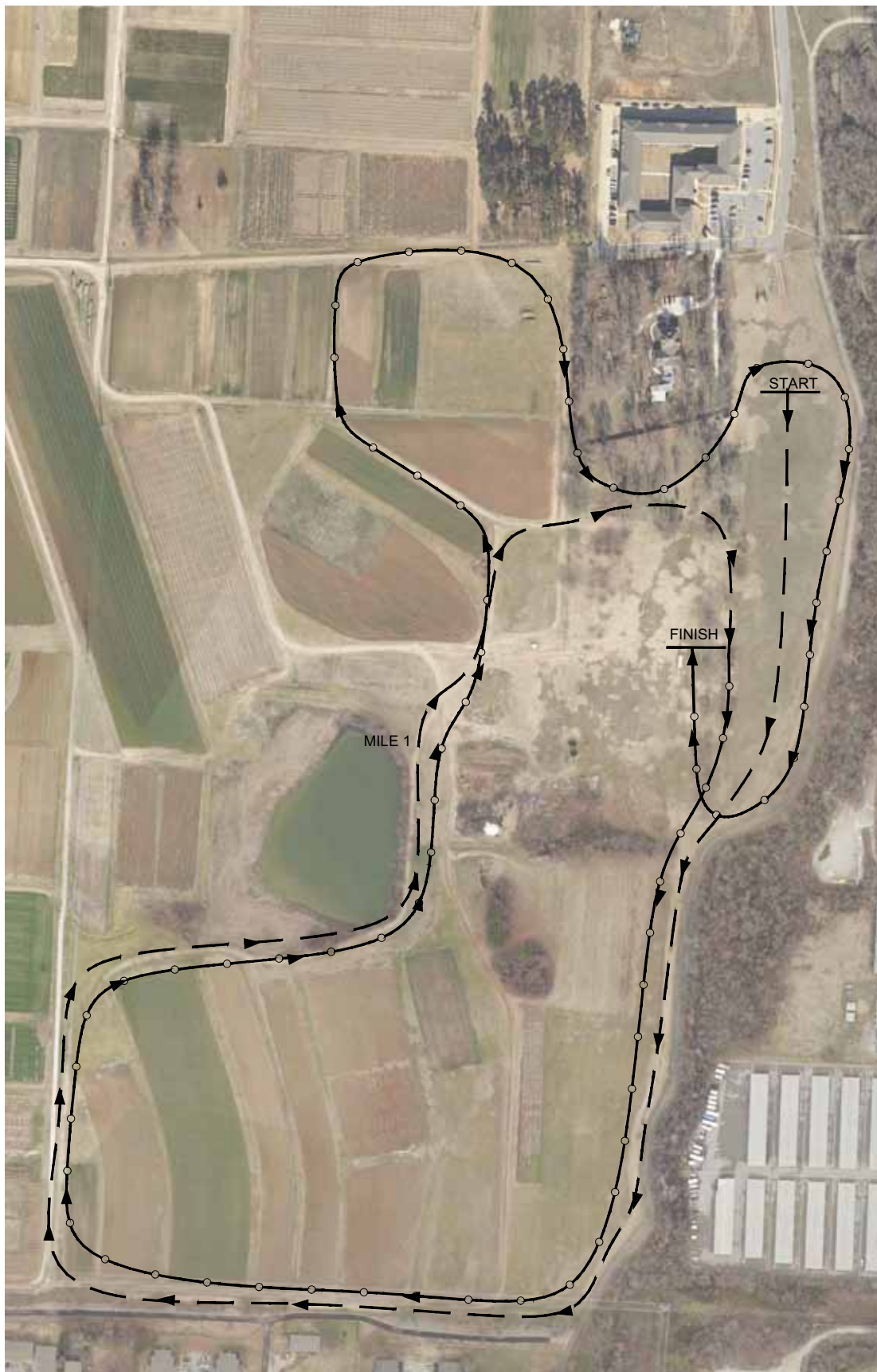
# 10K OPEN





FIRST LAP - - - - -  
SECOND LAP —○—○—○—  
THIRD LAP —●—●—●—

 NORTH  SCALE = 1' = 500'

# 5K OPEN, HIGH SCHOOL AND JUNIOR HIGH RACES



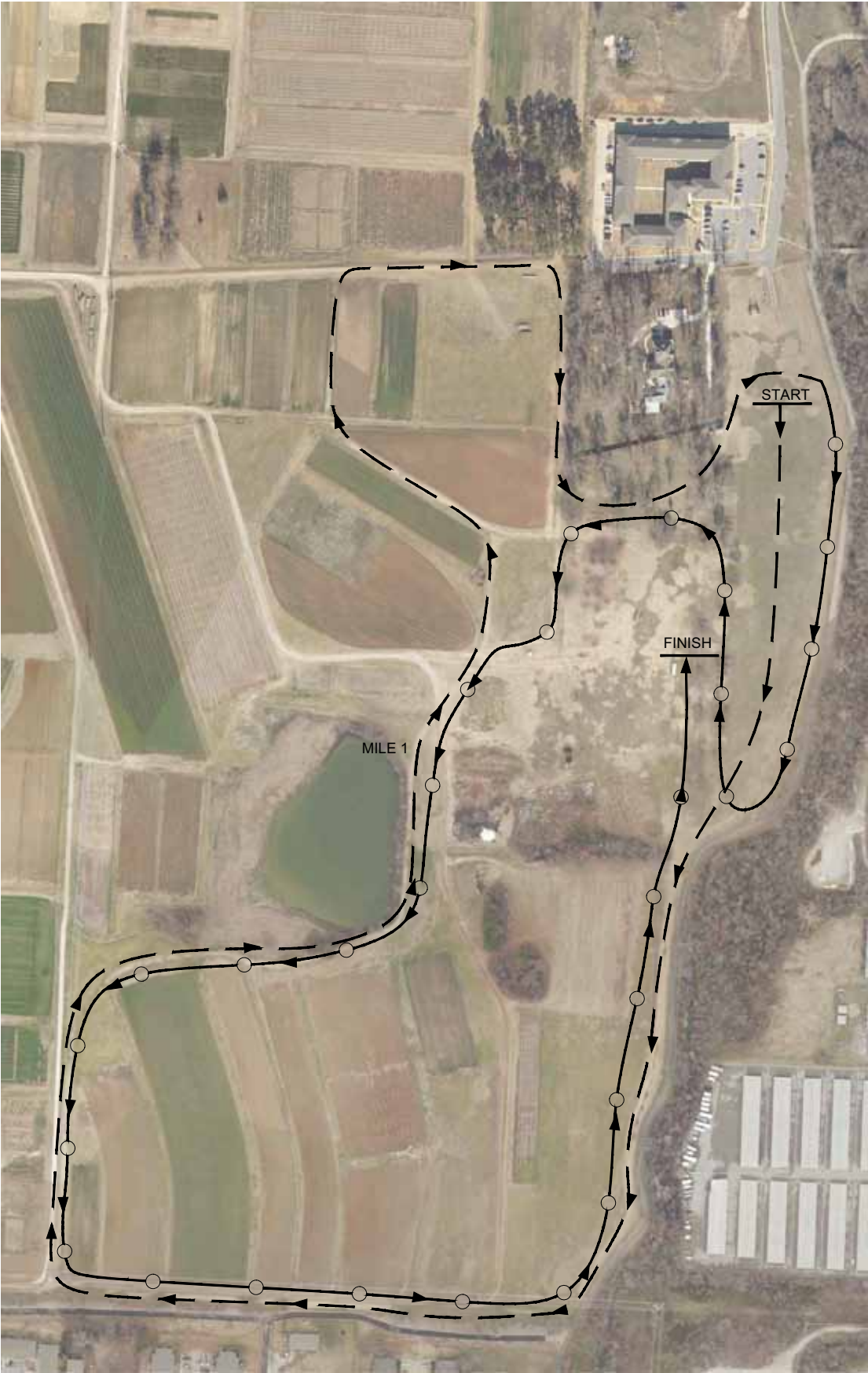
FIRST LAP — — — —  
SECOND LAP —●—●—●—●—

 NORTH  SCALE = 1" = 400'



# 8K MEN'S COLLEGIATE RACE



# 5K WOMEN'S COLLEGIATE RACE



FIRST LAP — — — —  
SECOND LAP —●—●—●—●—

   
NORTH SCALE = 1" = 400'





Ever wonder how much food it takes to feed all these hungry runners?

- 75 lbs of dried beans
- 500 lbs of taco meat
- 500 lbs of sandwich meat
- 1,000 pounds of fruit
- 100 gallons of salsa
- 5,000 meals served
- 150 lbs of chips

Pre-work:  
4 days starting Wednesday  
Man hours that day:  
9 hours times 12-14 volunteers





Runners come from all over the country from states like California, Iowa, Alabama, Florida, Colorado, Utah, Tennessee, and Massachusetts!



Over 6,500 runners and over 5,000 spectators take part in the event!



Arkansas cities with the largest turnout: Springdale, Rogers Fayetteville and Bentonville!



# 5K OPEN

## 2017 OPEN RESULTS

1	Mackenzie Wahpepah	Unattached	15:50.5
2	Al Maeder	Norman, OK	15:58.0
3	Samuel Bishop	Labadie, MO	16:19.4
4	James Gregory	Fort Collins, CO	16:23.4
5	Kieran Tylor	Fayetteville, AR	16:28.1
6	Reese Walters	Fayetteville, AR	16:28.9
7	Hurley Brian	Unattached	16:45.8
8	Patrick Hunter.	Green Forest, AR	16:52.6
9	Austin Salazar	Lowell, AR	16:53.0
10	Kevin Gunawan	Apple Valley, MN	17:03.6
11	Logan Buster	Columbia, MO	17:13.9
12	Ryan Thomas	Fayetteville, AR	17:21.7
13	Jacob Sanders	Heber Springs, AR	17:22.4
14	Hosea Soap	Jenks, OK	17:27.5
15	Noah McMurtrey	Bentonville, AR	17:28.9
16	Blake Thompson	Haysville, KS	17:36.0
17	Kraemer Jackson	Hammond, LA	17:42.6
18	Chase Pareti	Fayetteville, AR	17:50.4
19	Judah Alexander-Mac	Frisco, TX	17:52.2
20	Carson Been	Tulsa, OK	17:53.5
21	Trail McFarland	Fayetteville,	17:55.6
22	Kobi Moore	AR Fayetteville,	18:08.9
23	Juan Orrala	AR Rogers, AR	18:15.7
24	Bennett Paxton	Unattached	18:20.6
25	Caitlin Hammons	Glasgow, MO	18:22.3

## 2016 OPEN RESULTS

1	Julien Jeandrée	Conway AR	15:37.4
2	Carlton Orange	Fayetteville AR	15:37.9
3	Zach Walling	Portales, NM	16:07.8
4	Ryan Thomas	Fayetteville AR	16:38.2
5	Clay Martin	Kansas City MO	16:38.7
6	Reese Walters	Fayetteville AR	16:40.8
7	H. Abeyagunawardene	Bentonville AR	17:17.5
8	Zechariah VanFleet	Tahlequah OK	17:24.2
9	Jacob Kaemmer	Des Moines IA	17:28.6
10	Noah Landguth	Fairview TX	17:36.6

## 2015 OPEN RESULTS

1	Zach Walling	Portales, NM	15:48.87
2	Steven Stallis	Ballwin, MO	16:06.19
3	Mitchell Furtkamp	Springfield, MO	16:06.89
4	Eleazar Martinez	Fort Worth, TX	16:38.47
5	Christopher Marchman	Rolla, MO	16:39.75
6	Tyler Hileman	Bentonville, AR	16:39.85
7	Garron Schweighardt	Springfield, MO	16:47.65
8	Kyle McKinley	Edmond, OK	16:47.89
9	Aaron East	Rolla, MO	16:48.50
10	Brett Schauwecker	Lenexa, KS	16:54.18

# 10K OPEN

## 2017 OPEN RESULTS

1	Brent Ewing	Ottumwa, IA	33:14.3
2	Elijah Alexander-Ma	Frisco, TX	34:02.2
3	Austin Simkins	Fayetteville,	34:03.1
4	Brian Hurley	AR Fayetteville,	34:12.6
5	Chase Feltner	AR Fayetteville,	34:36.6
6	Ryan Brands	AR Fairview, TX	34:50.6
7	Brett Pedersen	Mckinney, TX	34:52.3
8	Aaron Caldwell	Fayetteville, AR	34:52.4
9	Will Muirhead	Fairview, TX	34:53.1
10	Brady Laboret	Lucas, TX	34:53.9
11	Bradley Davis	Wylie, TX	34:56.1
12	Dylan Allen	Ruston, LA	35:18.6
13	Bret O'Meara	Fayetteville, AR	35:23.9
14	Stuart Jackson	Lowell, AR	35:31.5
15	Ryan Spruell	Lucas, TX	35:33.0
16	Brandon Gardner	Bentonville, AR	35:38.9
17	Daniel Sanderson	Clarksville, AR	35:47.3
18	Whitson Bedell	Lucas, TX	35:50.9
19	Travis Wickliffe	Tahlequah, OK	35:53.2
20	Jimmy Herrera	Springdale, AR	35:56.6
21	Grant Gueller	Lucas, TX	36:06.9
22	Riley Markel	Fayetteville, AR	36:09.4
23	Drew Conner	Fayetteville, AR	36:10.6
24	William Godfrey	Fairview, TX	36:13.3
25	Rikki Hacker	Prairie Village, KS	36:28.7

## 2016 OPEN RESULTS

1	Julien Jeandrée	Conway AR	32:32.8
2	Jonathan Burgess	Rogers AR	32:49.0
3	Lane Boyer	Houston TX	33:45.4
4	Jeremy Daum	San Antonio TX	34:30.1
5	Aaron Caldwell	Fayetteville AR	34:55.0
6	Brian Sieczkowski	Maumelle AR	35:01.4
7	Brian Hurley	Fayetteville AR	35:13.3
8	Drew Conner	Fayetteville AR	35:35.2
9	Jarrett Sanders	Tulsa OK	35:40.2
10	Matt Martin	Bentonville AR	35:45.9

## 2015 OPEN RESULTS

1	Brandon Sotelo	Fort Worth, TX	31:54.96
2	Gabriel Zambrano	Fort Worth, TX	32:30.26
3	Cody Jones	Tulsa, OK	32:48.28
4	Chase Feltner	Fayetteville, AR	33:17.95
5	Alfredo Vega	Edinburg, TX	33:26.42
6	Shaun Koehn	Enid, OK	33:31.60
7	Mark Ferguson	Little Rock, AR	33:33.15
8	Seth Summerside	Fayetteville, AR	34:01.21
9	Cody Hughes	Westminster, TX	34:03.84
10	Jonathan Koscinski	Norman, OK	34:05.60



# MEN'S COLLEGIATE (8K)

## 2017 MEN'S UNIVERSITY DIVISION I (10K)

1	Alex George	University of Arkansas	29:45.4
2	Jack Bruce	University of Arkansas	30:03.6
3	Austen Dalquist	University off Arkansas	30:12.2
4	Sean Burke	Boston College	30:19.1
5	Justin Domangue	UT-Arlington	30:25.3
6	Joseph Meade	Texas State	30:30.6
7	Joacim Zuniga	Texas Tech	30:42.9
8	Kyle Levermore	University of Arkansas	30:44.1
9	Cameron Griffith	University of Arkansas	30:45.0
10	Jack Davidson	Santa Clara	30:46.1
11	Logan Pittzman	University of Arkansas	30:47.3
12	Isaac Lalang	Texas State	30:49.6
13	Alberto Herrera	Texas Rio Grande	30:51.4
14	Joey Berriatua	Santa Clara	30:55.8
15	Ebenether Wondaferey	Texas Tech	30:56.9

## 2017 MEN'S UNIVERSITY DIVISION I TEAM (10K)

TEAM	SCORE
Arkansas	23
Santa Clara	98
Texas State	101
UT-Arlington	108
Texas Tech	118

## 2017 MEN'S UNIVERSITY DIVISION II (10K)

1	Mark Shaw	Oklahoma City	29:55.9
2	Matthew Kade	Colorado School of Mines	30:20.5
3	Ricardo Ocampo	Colorado School of Mines	30:27.6
4	Matt Young	Unattached	30:29.0
5	Ryan Murphy	Unattached	30:29.3
6	Ben Schneiderman	Colorado School of Mines	30:33.9
7	Grant Colligan	Colorado School of Mines	30:36.0
8	Josh Hoskinson	Colorado School of Mines	30:38.7
9	Andrew Curry	Dallas Baptist	30:46.8
10	Owen Hind	West Texas A&M	30:47.4
11	Nick Sevcik	Colorado School of Mines	30:47.7
12	Logan Ramlet	Colorado School of Mines	30:48.3
13	Omar Es Salmouny	Lindenwood	30:52.7
14	Trent Phelps	Dallas Baptist	30:55.1
15	Stetson Rayas	Dallas Baptist	30:56.4

## 2017 MEN'S UNIVERSITY DIVISION II TEAM (10K)

TEAM	SCORE
Colorado School of Mines	20
Dallas Baptist	90
Lindenwood	93
OK Runner (Unattached)	148
West Texas A&M	168



## 2016 MEN'S UNIVERSITY DIVISION II

1	Alex George	University of Arkansas	23:32.78
2	Frankline Tonui	University of Arkansas	23:32.88
3	Miguel Bautista	Texas Tech	23:37.68
4	Cale Wallace	Unattached	23:46.20
5	Benard Keter	Texas Tech	23:46.97

## 2016 MEN'S UNIVERSITY DIVISION I TEAM

TEAM	SCORE
Arkansas	32
Wichita State	114
University of Missouri	115
Texas Tech	133
Villanova University	149

## 2016 MEN'S UNIVERSITY DIVISION II

1	Vincent Kiprof	Missouri Southern	23:03.54
2	Derrick Williams	CSU Pueblo	24:01.58
3	Moses Dirane	Cloud County CC	24:06.23
4	Omer Almog	Iowa Central	24:07.14
5	Nathanael Williams	Colorado School of Mines	24:10.64

## 2016 MEN'S UNIVERSITY DIVISION II TEAM

TEAM	SCORE
Colorado School of Mines	62
CSU Pueblo	90
Augustana	111
Iowa Central	117
Missouri Southern State University	135



# WOMEN'S COLLEGIATE (5K)



## 2017 WOMEN'S UNIVERSITY DIVISION I

1	Ashton Endsley	University of Arkansas	16:48.0
2	Sydney Brown	University of Arkansas	16:56.1
3	Jessica Allen	Missouri State	17:11.8
4	Maddy Reed	University of Arkansas	17:14.8
5	Ruth Wiggins	University of Arkansas	17:26.3
6	Alex Ritchey	University of Arkansas	17:28.4
7	Tori Shelton	UT-Arlington	17:30.7
8	Nokuthula Dlamini	Texas Tech	17:35.5
9	Shanieke Watson	UA-Little Rock	17:40.6
10	Grace Breiten	Missouri State	17:41.0
11	Emily Wilson	UIW	17:43.4
12	Micah Huckabee	University of Arkansas	17:43.9
13	Astrid Rosvall	UT-Arlington	17:45.7
14	Danielle Martinez	UIW	17:55.5
15	Greta Taylor	University of Arkansas	17:59.6

## 2016 WOMEN'S UNIVERSITY DIVISION I

1	Karissa Schweizer	University of Missouri	16:09.49
2	Devin Clark	University of Arkansas	16:19.02
3	Taylor Werner	University of Arkansas	16:30.69
4	Therese Haiss	University of Arkansas	16:33.49
5	Carina Viljoen	University of Arkansas	16:35.96
6	Karisa Nelson	Samford University	16:38.65
7	Jocelyn Caro	Texas Tech	16:40.44
8	Nikki Hiltz	University of Arkansas	16:41.85
9	Regan Ward	University of Arkansas	16:45.63
10	Rebekah Topham	Wichita State University	16:47.75
11	Sydney Brown	University of Arkansas	16:50.18
12	Emma Garner	Samford University	16:53.35
13	Valerie Reina	University of Arkansas	16:54.06
14	Jamie Kempfer	University of Missouri	16:55.39
15	Abby Gray	University of Arkansas	16:58.38

## 2017 WOMEN'S UNIVERSITY DIVISION I TEAM

TEAM	SCORE
Arkansas	18
Missouri State	80
Texas Tech	92
Texas State	125
UT-Arlington	134

## 2016 WOMEN'S UNIVERSITY DIVISION I TEAM

TEAM	SCORE
Arkansas	22
University of Missouri	72
Texas Christian University	127
Wichita State University	134
Samford University	156

## 2017 WOMEN'S UNIVERSITY DIVISION II

1	Aminat Olowora	Oklahoma City	16:23.1
2	Tie Marie	OK Runner (unattached)	16:28.5
3	Maggie Montayo	Unattached	16:34.4
4	Ashley Carreon	OK Runner (unattached)	17:08.7
5	Kayleigh Jarrett	Midwestern State	17:15.2
6	Lydia Mato	Oklahoma City	17:16.8
7	Abby Hoover	Oklahoma Baptist	17:20.3
8	Megan Wenham	Colorado School of Mines	17:24.0
9	Molly Reicher	Colorado School of Mines	17:26.2
10	Julia Pieper	Dallas Baptist	17:36.1
11	Sydney Lawrence	Oklahoma Baptist	17:38.8
12	Haley McFadden	Trinity	17:41.6
13	Jackline Jemeli	Wayland Baptist	17:42.7
14	Kara Burton	Bethel	17:42.7
15	Silvia Sosa	Wayland Baptist	17:42.9

## 2016 WOMEN'S UNIVERSITY DIVISION II

1	Aminat Olowora	Oklahoma City University	16:16.47
2	Leanne Pompeani	Iowa Central	16:27.62
3	Katherine Sitzes	Southwest Baptist	17:17.73
4	Bailey Hughes	CSU Pueblo	17:31.21
5	Miriam Roberts	CSU Pueblo	17:31.62
6	Sara Moore	Oklahoma City University	17:35.76
7	Ashley Lawson	Southwest Baptist	17:37.10
8	Mirena Goncalves	Barton Community College	17:38.01
9	Taylor Morrow	Southwest Baptist	17:40.42
10	Jordan Mathes	CSU Pueblo	17:41.48
11	Emily Harris	Missouri Southern	17:44.98
12	Megan Wenham	Colorado School of Mines	17:46.08
13	Hanna Barringer	Colorado School of Mines	17:47.56
14	Anna Mora	East Central	17:47.94
15	Alexis Fritz	Southwest Baptist	17:50.84

## 2017 WOMEN'S UNIVERSITY DIVISION II TEAM

TEAM	SCORE
Colorado School of Mines	55
Oklahoma Baptist	77
Dallas Baptist	86
Oklahoma City	119
Trinity	139

## 2016 WOMEN'S UNIVERSITY DIVISION II TEAM

TEAM	SCORE
Southwest Baptist	57
CSU Pueblo	85
Colorado School of Mines	99
Oklahoma City University	154
Iowa Central	172





“I got involved with the Chile Pepper Race to give back to the sport that has given me so much in life, and to help the next local kid to have the opportunity to reach his or her dreams in the sport.”

-Reuben Reina

Chile Pepper Board Member

NCAA Champion and two time Olympian



We've donated over \$650,000 to area high school cross country programs since 1988!



# HIGH SCHOOL BOYS & GIRLS



## 2017 HIGH SCHOOL BOYS INVITATIONAL

1	Camren Fischer	Fayetteville	15:06.0
2	Ryan Riddle	Webb City	15:31.2
3	Ansel Pendley-Griffin	Norman	15:33.9
4	Adam Dayani	Hebron, TX 1	15:36.4
5	Max McDaniel	Festus	15:40.1
6	Parker Ables	Heber Springs	15:42.0
7	Whit Dennis	Paschal	15:42.7
8	Stephen Kielhofner	Springfield	15:45.0
9	Luke Murphy	Lincoln Christian	15:45.0
10	Nathan Lauritsen	Bartlesville	15:47.7
11	Ryan Flood	Liberty, MO	15:51.7
12	Ean Buffington	Jackson, MO	15:54.4
13	Clayton Wilkerson	Smithson Valley	15:54.7
14	Myles Richter	Hebron, TX 1	15:55.1
15	Sandro Ramirez	Har-Ber	15:56.3

## 2017 HIGH SCHOOL GIRLS INVITATIONAL

1	Victoria Findley	Blue Springs South	17:40.2
2	Isabel Van Camp	Keller High School	17:44.0
3	Abbey Santoro	Keller High School	17:54.9
4	Julia Black	Keller High School	17:56.9
5	Mikayla Reed	Washington	18:12.8
6	Rilee Rigdon	Bartlesville	18:14.7
7	Kelie Henderson	Bolivar	18:24.0
8	Madelynn Hill	Liberty, MO	18:26.5
9	Danielle Hotalling	Blue Springs South	18:27.5
10	Morgan Claire Rose	Kirk Academy	18:28.5
11	Grace Custer	Houston Stratford	18:34.8
12	Sophia Maag	Norman	18:35.9
13	Mandy Sykora	Marietta	18:36.6
14	Ally Ryan	Jenks	18:37.6
15	Emily Patterson	Prosper, TX	18:40.2

## 2017 HIGH SCHOOL BOYS INVITATIONAL TEAM

TEAM	SCORE	TEAM	SCORE
Smithson Valley	207	Norman	336
Liberty, MO	245	Bentonville	342
Fayetteville	254	Hebron, TX 1	355
Keller-Blue	277	Festus	364
Webb City	321	Saint Joseph Central	375

## 2017 HIGH SCHOOL GIRLS INVITATIONAL TEAM

TEAM	SCORE	TEAM	SCORE
Keller-Blue	80	Houston	248
Houston Stratford	166	Blue Springs South	254
Norman	182	Fayetteville	369
Hebron, TX 1	210	Prosper, TX	380
Blue Valley North	232	Washington	411

## 2016 HIGH SCHOOL BOYS INVITATIONAL

1	Reed Brown	Carroll- Stripes	14:41.56
2	Matt Young	Jenks Trojans	15:09.61
3	Camren Fischer	Fayetteville	15:20.07
4	Jed Helker	Edmond Memorial	15:20.15
5	Stephen Kielhofner	Springfield Catholic	15:22.59

## 2016 HIGH SCHOOL GIRLS INVITATIONAL

1	Victoria Findley	Blue Springs South	17:33.09
2	Cheyenne Walden	Sand Springs	17:35.54
3	Abbey Santoro	Keller High School	17:38.61
4	Julia Black	Keller High School	17:39.28
5	Erica Fisher	Arlington High School	17:44.25

## 2016 HIGH SCHOOL BOYS INVITATIONAL TEAM

TEAM	SCORE	TEAM	SCORE
Carroll- Stripes	131	Bartlesville Boys	369
Lafayette V	171	Webb City	390
Festus	239	Edmond Memorial	399
Plano West	331	St. Joseph	441
Fayetteville	347	Owasso	445

## 2016 HIGH SCHOOL GIRLS INVITATIONAL TEAM

TEAM	SCORE	TEAM	SCORE
Keller	88	Carroll- Green	339
Carroll- Stripes	90	Jackson High School	404
Blue Springs South	269	Fayetteville	404
Bentonville	303	Bartlesville	435
Washington	333	Saint Joseph Central	481



# JUNIOR H.S. BOYS & GIRLS

## 2017 JR HIGH SCHOOL BOYS INVITATIONAL

1	Reuben Reina	Central Junior High	16:53.8
2	Reuben Reina	Greenbrier	17:13.4
3	Jack Williams	Fayetteville Junior High	17:17.5
4	Isaiah Billingsley	Miller Grove	17:19.9
5	Alec Spencer	Bentonville	17:26.6
6	Luke Beissel	Kirk Academy	17:29.2
7	Cade Swindle	Conway	17:31.8
8	Kelton Sorrell	East Newton	17:37.2
9	Ethan Kailey	Conway	17:40.3
10	Dawson Welch	Central Junior High	17:42.7
11	Arron Spencer	Bentonville	17:55.5
12	William Swecker	Lake Hamilton Jr. High	17:57.1
13	Bresner Austin	Bryant	17:57.4
14	Lawson Douglas	Rogers Heritage	18:00.6
15	Ian Bush	Conway	18:04.9

## 2017 JR HIGH SCHOOL BOYS INVITATIONAL TEAM

TEAM	SCORE	TEAM	SCORE
Conway	59	Lake Hamilton	275
Fayetteville Junior High	91	Rogers Heritage	276
Central Junior High	95	Bryant	283
Bentonville	180	Siloam Springs	340
Rogers	196	Ramay	366

## 22016 JR HIGH SCHOOL BOYS INVITATIONAL

1	Carter Betts	Fayetteville White	17:22.49
2	Luke Pabst	Bentonville High School	17:30.52
3	Cade Swindle	Conway Jr. High	17:34.00
4	Trenton Barnes	Heber Springs	17:34.15
5	Bryce Batson	Central Junior High	17:42.21

## 2016 JR HIGH SCHOOL BOYS INVITATIONAL TEAM

TEAM	SCORE	TEAM	SCORE
Conway	101	Central Junior High	211
Bentonville	122	Heritage	277
Rogers	141	Bolivar	294
Van Buren	162	Washington	295
Lake Hamilton	206	East Newton	324



## 2017 JR HIGH SCHOOL GIRLS INVITATIONAL

1	Abigail Livingston	Central Junior High	19:52.4
2	Payton Hinkle	Broken Arrow	20:02.6
3	Kiley Webb	Melbourne	20:09.6
4	Sterling Thomas	Bentonville	20:21.4
5	Hayden Weber	Washington Junior High	20:36.2
6	Mary Margaret Harris	Fayetteville Junior High	20:48.9
7	Taylor Owens	Fayetteville Junior High	20:57.0
8	Bailey Miller	Rogers	20:59.6
9	Moraylia Huaracha	Elkins	21:03.8
10	London Wilson	Bolivar	21:05.8
11	Clarissa Sisson	Broken Arrow	21:08.9
12	Laynee Casady	East Newton	21:12.1
13	Maddie Anders	Star City	21:13.4
14	Kenja Dresel	Woodland	21:13.8
15	Carson W asemiller	Woodland	21:14.1

## 2017 JR HIGH SCHOOL GIRLS INVITATIONAL TEAM

TEAM	SCORE	TEAM	SCORE
Bentonville	103	Washington Junior	283
Woodland	120	Lake Hamilton	301
Rogers	135	Siloam Springs	321
Fayetteville Junior High	165	Ozark Junior High	337
Melbourne	256	Bryant	338

## 2016 JR HIGH SCHOOL GIRLS INVITATIONAL

1	Brylee Gogel	Lincoln Jr. High	19:00.99
2	Rachel Sutliff	Grapevine Middle School	19:31.58
3	Ali Nachtigal	Rogers Jr. High	19:54.39
4	Kiley Webb	Melbourne High School	19:58.93
5	Day Hailey	Heritage Jr High	20:00.88

## 2016 JR HIGH SCHOOL GIRLS INVITATIONAL TEAM

TEAM	SCORE	TEAM	SCORE
Bentonville	115	Heritage	250
Rogers	175	Siloam Springs	254
Woodland	228	Bolivar	294
VJHS	228	Central Junior High	301
Fulbright	238	Lake Hamilton Jr. High	316







MEXICAN FEAST PROVIDED BY:



Twin City Produce



The Chile Pepper Festival hosts approximately 10,000 people a year!



Over 90 college and 250 high school teams compete in the event each year!



MISSION STATEMENT  
We inspire and support Northwest Arkansas youth cross country teams, promoting the benefit of exercise, healthy lifestyle, teamwork and lifelong sport.





# A HOG CALL OF APPRECIATION TO OUR SPONSORS

HABANERO SPONSORS



CAYENNE SPONSORS



JALAPENO SPONSORS



POBLANO SPONSORS



John Elrod, Attorney



CHILE PEPPER SUPPORTERS



Twin City Produce



Bakewell Chemical Company



MEDIA SALSA

**CHILEPEPPERFESTIVAL.ORG**

VISIT US ONLINE FOR MORE INFO OR TO REGISTER FOR THE RACE TODAY!

